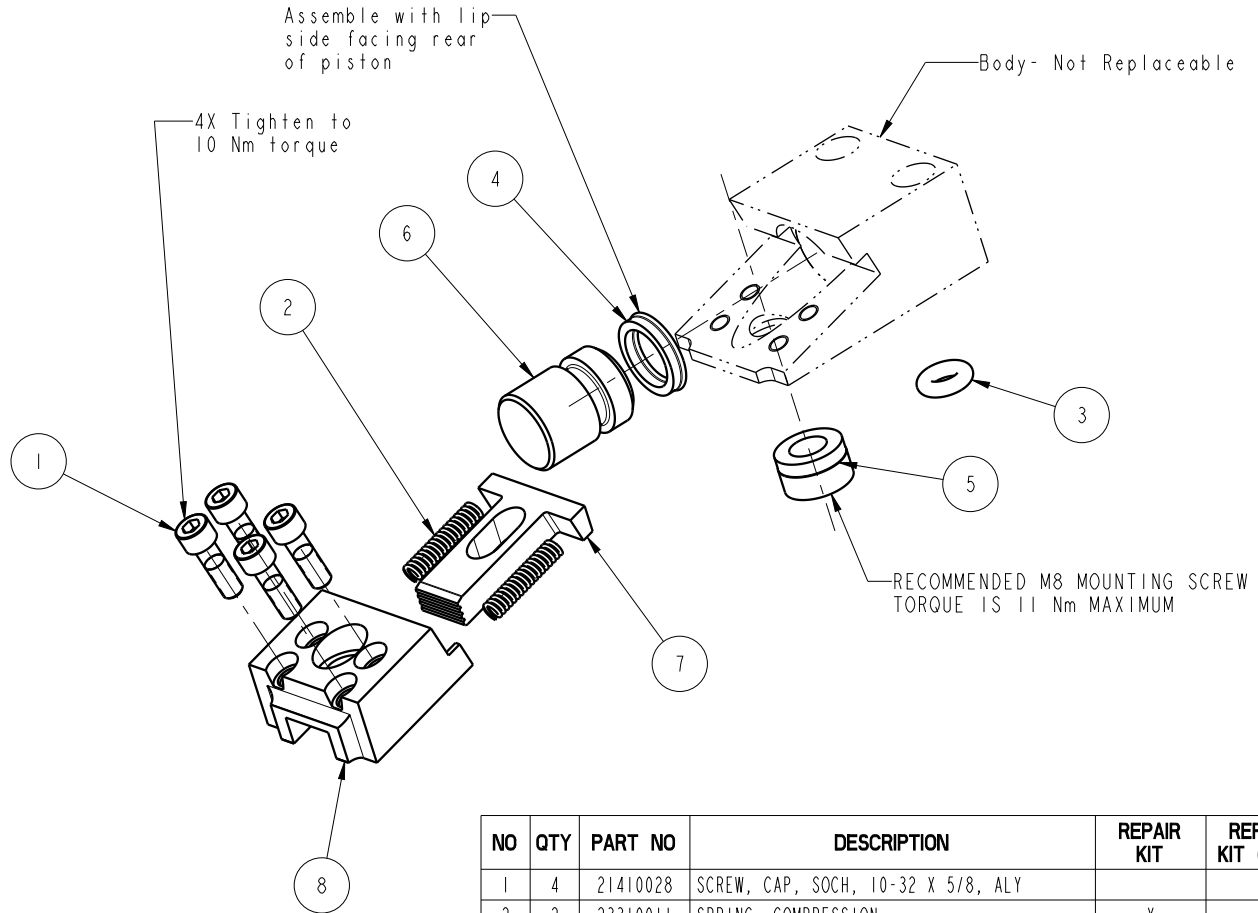


Lubricate all seals with clean hydraulic oil prior to assembly.
DO NOT USE SILICONE BASED LUBRICANTS.



| NO | QTY | PART NO | DESCRIPTION | REPAIR KIT | REPAIR KIT (FKM) |
|-----|-----|----------|------------------------------------|------------|------------------|
| 1 | 4 | 21410028 | SCREW, CAP, SOCH, 10-32 X 5/8, ALY | | |
| 2 | 2 | 23310011 | SPRING, COMPRESSION | X | X |
| 3 | 1 | 39000068 | O-RING, (-202) | X | 39V00068 |
| 4 | 1 | 39010013 | SEAL, BEVEL, 9/16 X 3/32 X 3/4 | X | 39012000 |
| 5 | 1 | 41540800 | PIVOT, EC, METRIC | | |
| 6 | 1 | 81510800 | PISTON, EDGE CLAMP, 2000 | | |
| 7 | 1 | 81530800 | BLADE, EDGE CLAMP, 2000 | | |
| 8 | 1 | 81530801 | CAP, EDGE CLAMP, 2000 | | |
| N/A | N/A | 62153004 | KIT, REPAIR | NOTED | N/A |
| N/A | N/A | 62153005 | KIT, REPAIR, FKM | N/A | NOTED |

PARTS LIST



VEKTEK, INC.
1334 E. SIXTH AVE. P.O. BOX 625
EMPORIA, KS. 66801 U.S.A.

ASSEMBLIES AFFECTED
41-5310-00

PARTS LIST, ASSY, EDGE CLAMP, 9KN, MM

SIZE
A MPL1554

REV
K

SHEET 1 OF 1

| | | | | |
|---------|------------------------|--|------------|----------|
| K | 2943 | RELEASE | JDW | 11/12/15 |
| REV | IN ACCORDANCE WITH ECN | EFFECTIVE DATE | REVISED BY | DATE |
| DRW BY: | BUSH | DRAWING STATUS: Released | | |
| DATE: | 12/19/94 | PRODUCTION APPROVED FOR RELEASED STATUS ONLY | | |

FORM FEG035_PL_ASIZE, REV. B